

# ELAT Office Hours

September 10, 2019

Amplify.



**COLORADO**  
Department of Education

# Using Zoom

## Using Zoom

- Your lines are muted automatically due to the size of the group.
- You can type questions into the chat box for the group to see (or specify for it to only go to an individual).
- Questions will be answered either during the session or afterwards depending on time and content.
- We will be recording this session. Your chat comments will be included in the recording for future reference.

## Our Presenters for Today

- Tammy Yetter, ELAT Project Manager
- Karen Cushman, Amplify
- Dori Klar, Amplify

[www.amplify.com/colorado](http://www.amplify.com/colorado)

Important Updates  
Resources for Leaders  
Resources for Teachers  
Office Hour Registration and Recorded Webinars  
Professional Development

Please share this resource with your Leaders and Teachers.

We will continue to add additional tools, including today's recording and PowerPoint for you to use.

# Early Literacy Assessment Tool Project

---

## Early Literacy Assessment Tool

The 2012 School Finance Act required the Colorado Department of Education to select a contractor to supply an early literacy assessment tool that teachers may use to obtain real-time assessments of the reading skill levels of students in kindergarten through third grade. The intent of the program was to support state purchase of software that would provide individualized assessments with immediate results, store and analyze those results, and recommend activities based on those results. Through a competitive bid process, the contract was awarded to Amplify for its DIBELS Next system and diagnostic reading assessments in January 2013 through June 30, 2018.

In the spring 2018 through a new competitive process the award was made to both Amplify and Istation for the approved interim assessments on both platforms. The new contract duration is for the next five years. Legislative funding was passed in the spring of 2019, therefore the department will offer the project for the 2019-2020 school year. This is a non-competitive project.

By participating in the Early Literacy Assessment Tool Project, applicants will select one of the two vendors and then receive access to the LEA selected online approved READ Act assessment:

- Amplify for DIBELS Next and IDEL, approved interim assessments, and DIBELS Deep PA/WRD diagnostic reading assessment, an approved diagnostic measure.
- Istation for ISIP Early Reading, Istation and ISIP Lectura Temprana, Istation, approved interim assessments for the READ Act.

All approved applicants will receive software licenses to use the assessment that they select. The tool will store and analyze the results and recommend school and home activities based on those results. Applicants will be responsible for providing their own hardware.

Hardware is not included. A list of devices that support the software is available for each vendor:

- [Amplify devices](#)
- [Istation devices](#)

VENDOR Resources and Information:



[View Amplify Resources](#)

[View Istation Resources](#)

# Objectives

By the end of the session you will be able to:

- Review, locate and use the Instruction Tab
- Locate and use the resources explaining the Instruction Tab
- Determine when to use Groups to monitor a subgroup of students
- Locate and use the resources explaining how and when to create Groups

# Agenda

1. Getting Started With the Instruction Tab
2. Live Demo of the Instruction Tab
3. Resources to Support the Use of the Instruction Tab
4. Getting Started with Groups
5. Live Demo of Using Groups
6. Resources to Support the Use of Groups

# Getting Started

## What is the Instruction Tab?

### A Tool for Teachers and Coaches/Interventionists to:

- Access Amplify literacy programs, including Boost, and instructional resources from a single dashboard;
- Access student-specific resources based on assessment results;
- View the student's small-group activities and access Small-Group Advisor to review or update your groupings;
- View students' observed skill gaps and any related activities from Item-Level Advisor.

CLASS Reading 1.0

Grade 1

NAME	COMP	TIC
Aaron, Adrian	184	
Aguirre, Isaiah	272	
Apple, Kristen	137	
Atkins, Stefanie		
Barns, Jasmine	230	C* IN5
Benner, O		
Bennett, R		
Bests, Jas		
Caldwell, Traci		
Cameron, Annabelle	0	
Cars, Gabriel	309	C* IN5
Cartwright, Tyrese	123	
Conroy, Bob	0	
Cotton, Saarah		
Darns, Kaylee	453	S* IN5
Eshton, Mark		
Estes, Wasim	133	
Felt, Jaden	453	F* IN5
Gasset, Ticora	147	
Gilmor, Skarlet		
Gins, Kelley	0	
Greenwood, Nazifa		
Huang, Margot		
Jensen, Seniya	279	

Click the row for the student you want to view.

## Cartwright, Tyrese

Comprehension Amplify Reading

### Small-Group Instruction

Group 4 | Alphabetic Principle and Basic Phonics | Accurate Reading of Connected Text

Short-A Word Chain Short-E Word Chain Initial Letter Exchange

Final Letter Exchange

More Activities

#### Tyrese's Reading Skills

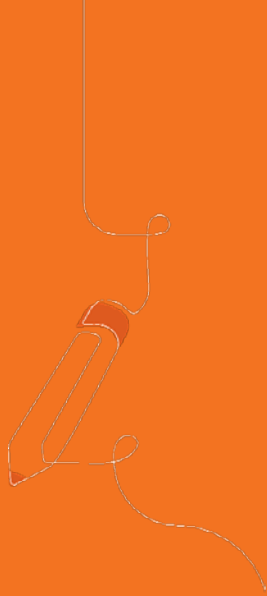
- Reads Sound by Sound
- Accurate but Slow
- Applies Correction on Second Reading

#### Activities for Tyrese

Short-A Word Chain	Phonics	NWF
Short-E Word Chain	Phonics	NWF
Short-I Word Chain	Phonics	NWF
Short-O Word Chain	Phonics	NWF
Short-U Word Chain	Phonics	NWF
Initial Letter Exchange	Phonics	NWF
Final Letter Exchange	Phonics	NWF
Select From 2 Letters	Phonics	NWF
Int. Sound Letter ID-2	Phonics	NWF

- Log into mCLASS.amplify.com
- Click on DIBELS Next Tile to see your class
- Click Instruction Tab





# Live Demo

## Instructional Tab

# mCLASS Home Resources

## [mCLASS Training Tutorial](#)

**Amplify.**

**Amplify.**

**mCLASS Instruction**  
Shortening the distance from data to instruction

**Menu**

- Introduction
  - Welcome
- Introduction
  - Introduction
- Introduction
  - Objectives
  - Demonstration
- Small-Group Advisor
  - Objectives
  - Small-Group Advisor
  - Demonstration
  - Reflection
- Item-Level Advisor
  - Objectives
  - Access Item-Level Advisor
  - Observation Panel
  - Additional Observations
  - Suggested Activities 1
  - Suggested Activities 2
  - Suggested Activities 3
  - Reflection
- Resources for Parents
  - Objectives
  - Access Home Connect
  - Generate Letters 1
  - Generate Letters 2
  - Sample Letter 1
  - Sample Letter 2
  - mCLASS Home Connect Site
- Customer Care
  - Customer Care

◀ PREV    NEXT ▶

## How To: Use mCLASS® Instruction

The new mCLASS Instruction reporting page links your students' results to the mCLASS instructional resources driven by those results, including individual and small-group lessons, teacher-led instruction, and lessons informed by student performance on specific measures.

### Overview

mCLASS Instruction is a new reporting page available in your mCLASS®:DIBELS Next® or mCLASS®:Reading 3D™ class and group reports. With mCLASS Instruction, you can:

- Access your Amplify literacy programs and instructional resources from a single dashboard
- Access student-specific resources based on assessment results
- View the student's small-group activities and access Small-Group Advisor to review or update your groupings
- View students' observed skill gaps and any related activities from Item-Level Advisor

## [Instruction Guide](#)

# Getting Started

## Using “Groups”

A Tool for Teachers, Coaches/Interventionists & Administrators to:

- View a subset of of your students in a classroom report;
- Monitor progress monitoring of a sub group of students;
- Monitor growth for a particular intervention group;
- Monitor growth of students by sub-measure.

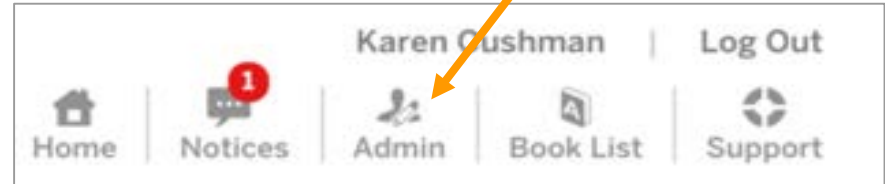
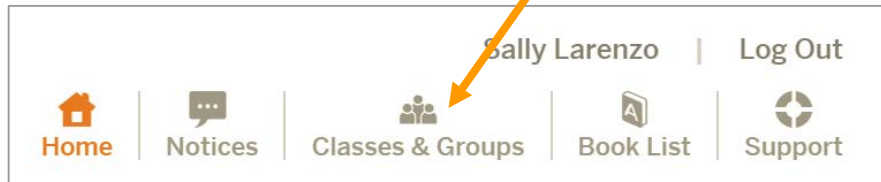
\*\*Full and System Access users are able to create groups.

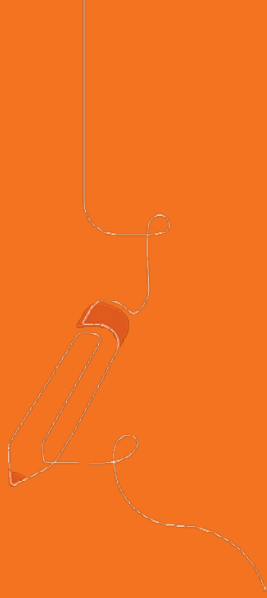
# Using Groups

- Log into mCLASS.amplify.com
- Look at the top right corner

Click on:

- Full users: Classes & Groups
- System users: Admin





# Live Demo

## Using Groups

# Groups Resources

**Amplify. Classes and Groups**

Sally Lorenzo | Log Out

Home | Notices | **Classes & Groups** | Book List | Support

Classes | **Groups** | ? HELP

Washington Elementary

Find Classes: Class Name  Enter Class Name

Filter Classes: Grade   Errors

**2** Classes

<input type="checkbox"/>	Class Name	Class ID	Grade	Official Teacher	Staff	Students	Demo
<input type="checkbox"/>	Mixed-Grade Class	MS001		Sally Lorenzo	1	6	No
<input type="checkbox"/>	Demo LorenzoS			Sally Lorenzo	1	13	Yes

# Groups Resources

[PDF of how to create groups](#)

Amplify.

## How to Create Informal Groups

Groups are used to access students by assessors in addition to the official classroom teacher, or to view students in customized grouping (by intervention, by interventionist case load, specialized programming, etc.).

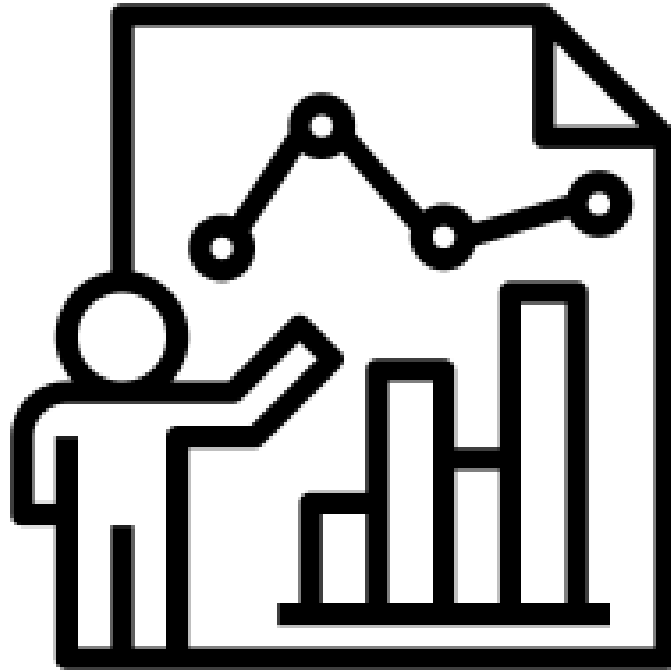
- They do not replace official classes.
- Data collected through informal groups will populate into official classes once synced.
- Users with System or Full access are able to create groups.

# Q & A





# Take it back to your schools



# Office Hours #2 - Deep

**September 24th, 3:30pm - 4:30pm**

**Please**  
**Register**

During this session we will discuss when and why to use Deep (approved diagnostic) with specific students.

In addition, we will be showing you where to locate additional PD resources within mCLASS.

# Looking ahead

[www.amplify.com/colorado](http://www.amplify.com/colorado)

Section: PD opportunities

Register:

<https://tinyurl.com/CDE-Regional>

mCLASS: DIBELS Next 2019-2020 Regional Professional Development Scheduled Dates by Region				
Region	Data Analysis for Leaders	Data Analysis for Teachers	Instructional Planning and Delivery for Leaders	Instructional Planning and Delivery for Teachers
<b>Metro Area</b> Host: 27J Schools	BOY: 9/23/19 MOY: 2/3/20 EOY: 5/18/20	BOY: 9/24/19 MOY: 2/4/20 EOY: 5/19/20	BOY: 9/30/19 MOY: 2/5/20	BOY: 10/1/19 MOY: 2/6/20
<b>North Central</b> Host: Greeley	BOY: 9/25/19 MOY: 1/30/20 EOY: 5/27/20	BOY: 9/26/19 MOY: 1/31/20 EOY: 5/28/20	BOY: 10/3/19 MOY: 2/6/20	BOY: 10/4/19 MOY: 2/7/20
<b>Northeast</b> Host: NE BOCES	BOY: 9/23/19 MOY: 1/23/20 EOY: 5/26/20	BOY: 9/24/19 MOY: 1/24/20 EOY: 5/27/20	Not available	Not available
<b>Northwest</b> Host: Eagle	BOY: 9/16/19 MOY: 2/3/20 EOY: 5/19/20	BOY: 9/18/19 MOY: 2/5/20 EOY: 5/20/20	Not available	Not available
<b>Pikes Peak</b> Host: Colorado Springs	BOY: 9/17/19 MOY: 1/28/20 EOY: 5/20/20	BOY: 9/18/19 MOY: 1/29/20 EOY: 5/21/20	BOY: 9/19/19 MOY: 1/30/20	BOY: 9/19/19 MOY: 1/30/20
<b>Southeast</b> Host: SE BOCES	BOY: 9/20/19 MOY: 1/31/20 EOY: 5/29/20	BOY: 9/27/19 MOY: 2/7/20 EOY: 5/22/20	Not available	Not available
<b>Southwest</b> Host: SLV BOCES	BOY: 9/23/19 MOY: 2/3/20 EOY: 5/18/20	BOY: 9/24/19 MOY: 2/4/20 EOY: 5/19/20	Not available	Not available
<b>West Central</b> Host: Montrose	BOY: 9/26/19 MOY: 2/10/20 EOY: 5/18/20	BOY: 9/27/19 MOY: 2/11/20 EOY: 5/18/20	Not available	Not available

# Resources and Support

## Amplify

Email: [help@amplify.com](mailto:help@amplify.com) any time

Phone: (800) 823-1969, Monday – Friday from 7a.m. – 7p.m. ET

Live Chat: [mCLASS homepage](#)

## Web resources

- [www.amplify.com/colorado](http://www.amplify.com/colorado)
- [mclass.amplify.com](http://mclass.amplify.com)
- [www.cde.state.co.us/coloradoliteracy](http://www.cde.state.co.us/coloradoliteracy)

We appreciate your time today!

A copy of the presentation along with links to resources will be sent to all participants who registered for this webinar.

Please feel free to share these resources across your building and/or district.